

Datasheet



**Slow Mixer**

+49 163 7037447

info@ptech-gmbh.com • www.ptech-gmbh.com



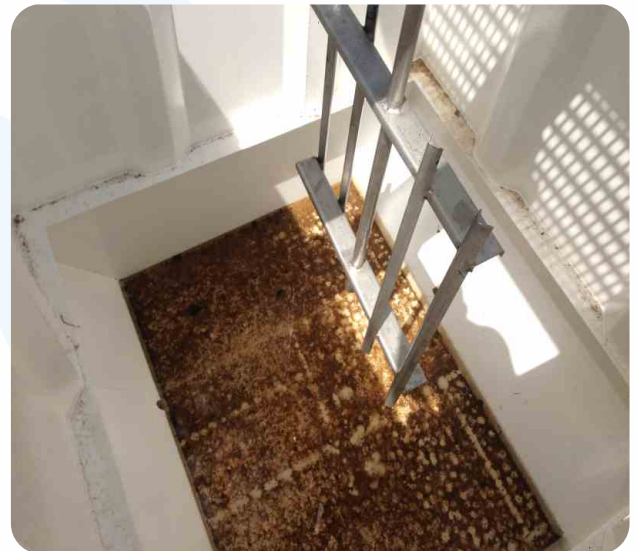
## Equipment Description

Slows mixers that are manufactured in Ptech GmbH premises are used in coagulation units of chemical wastewater treatment plants or in small-scale sludge thickening units. Slows mixers are also named as propellers due to the wide blade structures they have. The dimensions, lengths, counts of blades are determined/scaled according to the tanks they are designed for.

Slow mixers consist of a motor, reducer, coupler, shaft and blades/propellers. Motor output and reducer speed is taken into account to maintain arrow structure when designed.

## Material

ST37-2 SDG / 304 L / 316 L SS



# Ptech

ENERGY - WATER - SEWAGE TREATMENT TECHNOLOGY

## Umwelttechnik GmbH



+49 163 7037447  
info@ptech-gmbh.com  
Katzwanger Str. 150, 90461  
Nürnberg, Germany

📷 ptechgmbh  
🌐 Ptech Umwelttechnik GmbH  
📺 @PtechGmbH

[www.ptech-gmbh.com](http://www.ptech-gmbh.com)